

Plans and drawings relevant to reports submitted to Western Area Planning Committee

Wednesday 21st August 2024 at 6.30pm

**At Council Chamber, Council Offices, Market Street,
Newbury, RG14 5LD**

&

And via Zoom

[to be read in conjunction with the main agenda]

Please note:

- *All drawings are copied at A4 and consequently are not scalable*
- *Most relevant plans have been included – however, in some cases, it may be necessary for the case officer to make a selection*
- *All drawings are available to view at www.westberks.gov.uk*



West Berkshire
C O U N C I L

23/02520/NONMAT & 23/02544/FUL
Newspaper House
Faraday Road
Newbury
RG14 2DW



Ward Bdy

Path (um)

Newspaper House

Parking
42 Cars

Service Yard

Service Yard

Electricity Sub Station

1Q

3Q

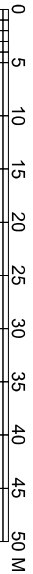
4Q

5Q

L TWR

EI
Sub
Sta

Stand



Notes

Existing Permeable Landscaping
2724.5 sqm

Permeable surface

D	Updated	08.05.24
C	Updated	19.04.24
B	Updated	18.04.24
A	Updated	17.04.24

Revisions

Cinch Newspaper House
Newbury

Existing
Site Plan

ROGER MEARS ARCHITECTS LLP
Union Chapel, Compton Avenue
London N1 2XD
tel 020 7359 8222
m@rmars.co.uk
www.rmars.co.uk

Date	Scale	Job No.	Code	Draw No.
17.11.21	1:500@A3	2104	-	011D



Notes

New Hardstanding
Asphalt on Type 1 and hardcore base.
191 sqm
Proposed Permeable Landscaping
100% of surface
Soft Landscaping 272 sqm
Gravel 736 sqm

- Gravel
- Soft Landscaping
- Parking
CARS
20 Spaces
CYCLES
7 Vans

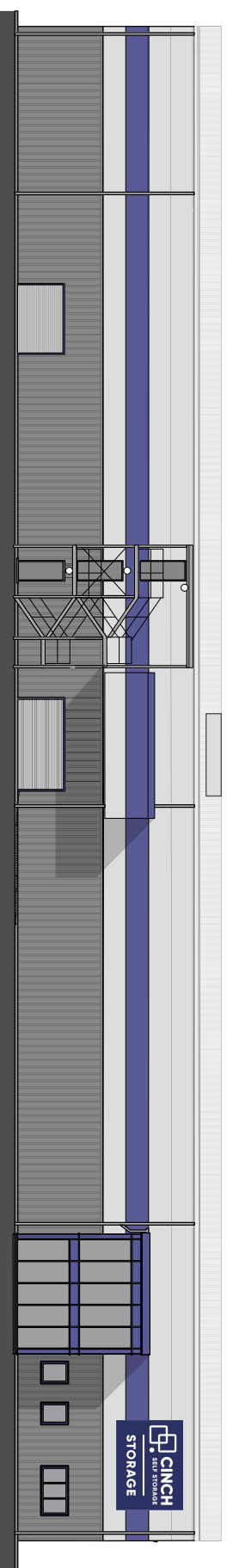
Revisions		
F	Updated	08.05.24
E	Updated	07.05.24
D	Updated	03.05.24
C	Updated	19.04.24
B	Updated	18.04.24
A	Updated	17.04.24

Cinch Newspaper House
Newbury

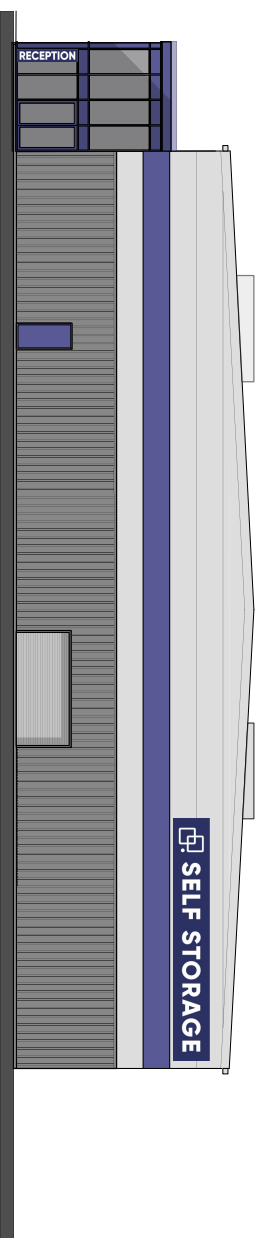
Proposed Site Plan

ROGER MEARS ARCHITECTS LLP
Union Chapel, Compton Avenue
London N1 2XD
tel 020 7359 8222
ma@mears.co.uk
www.meers.co.uk

Date	Scale	Job No.	Code	Draw No.
17.11.21	1:500@A3	2104	-	121 F



01 Proposed East Elevation
114 1:200@A3; 1:100@A1



02 Proposed North Elevation
114 1:200@A3; 1:100@A1



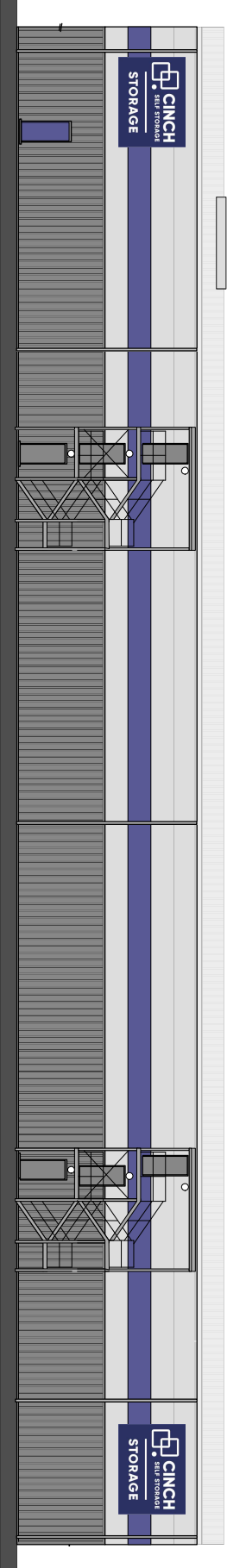
Revisions		
A	Updated	30.10.23

Cinch Newspaper House
Newbury

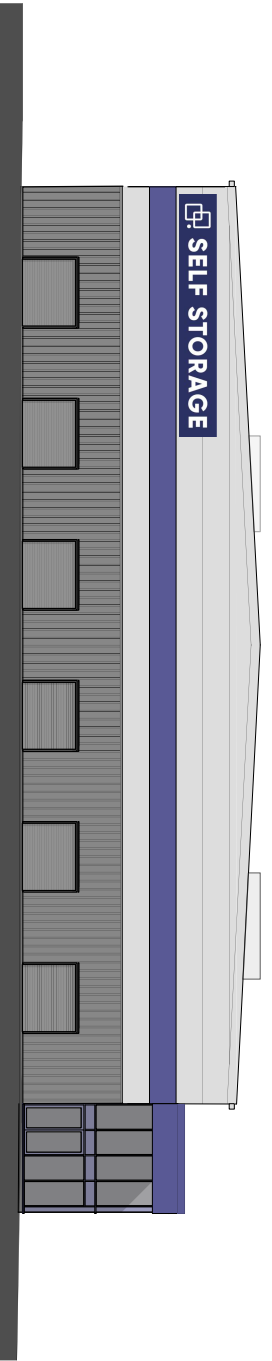
Proposed
East & North Elevations

ROGER MEARS ARCHITECTS LLP
Union Chapel, Compton Avenue
London N1 2XD
tel 020 7359 8222
mailto:rm@rmas.co.uk
www.rmas.co.uk

Date	Scale	Job No.	Code	Dwg No.
17.11.21	1:200@A3	2104	-	114A



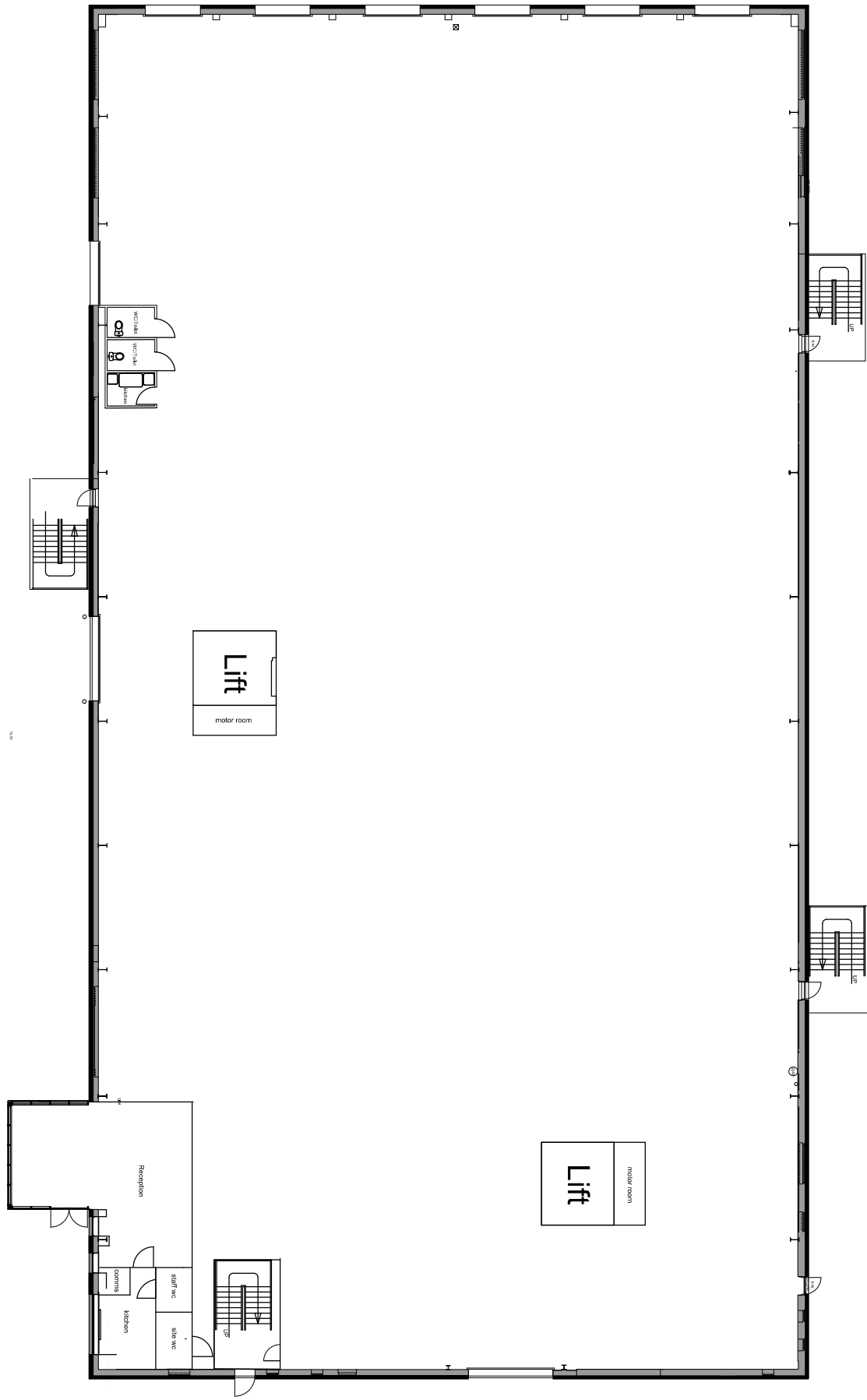
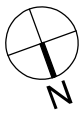
01 Proposed West Elevation
115 1:200@A3; 1:100@A1



02 Proposed South Elevation
115 1:200@A3; 1:100@A1



<p>Revisions</p> <table border="1"> <tr> <td>A</td> <td>Updated</td> <td></td> <td></td> <td>30.10.23</td> </tr> </table>					A	Updated			30.10.23
A	Updated			30.10.23					
<p>Cinch Newspaper House Newbury</p>									
<p>Proposed West & South Elevations</p>									
<p>ROGER MEARS ARCHITECTS LLP Union Chapel, Compton Avenue London N1 2XD tel 020 7359 8222 mailto:rm@mears.co.uk www.rmeas.co.uk</p>									
Date	Scale	Job No.	Code	Draw No.					
17.11.21	1:200@A3	2104	-	115A					



01 As Built Ground Floor Plan
116 1:200@A3: 1:100@A1

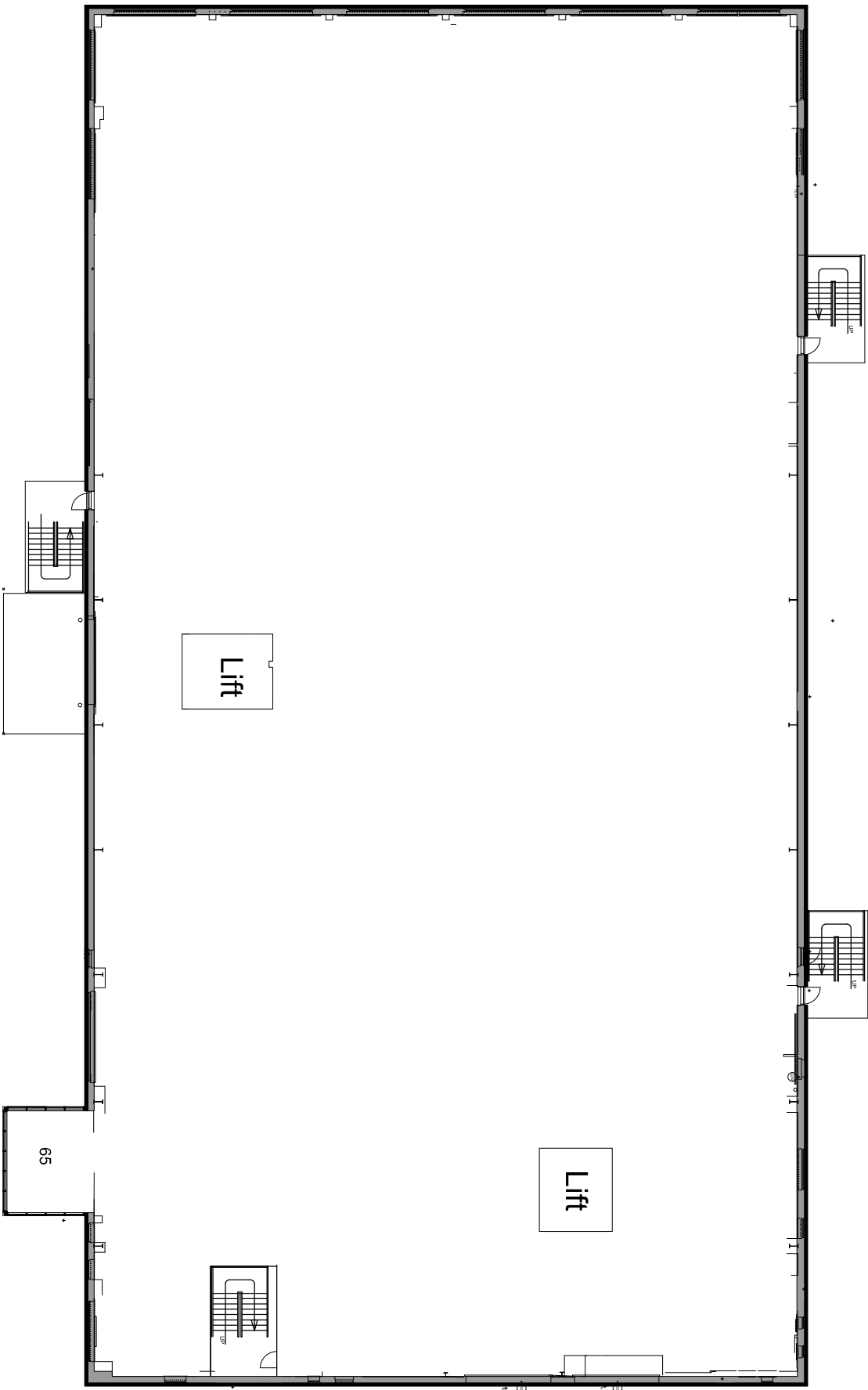
Notes

Revisions	A	Updated	30.10.23
Cinch Newspaper House Newbury			

Proposed Ground Floor Plan

ROGER MEARS ARCHITECTS LLP
 Union Chapel, Compton Avenue
 London N1 2XD
 t: 020 7359 8222
 m: 07734 089222
 www.rmeas.co.uk

Date	Scale	Job No.	Code	Draw No.
17.11.21	1:200@A3	2104	-	116A



01 As Built First Floor Plan
117 1:200@A3: 1:100@A1

Notes

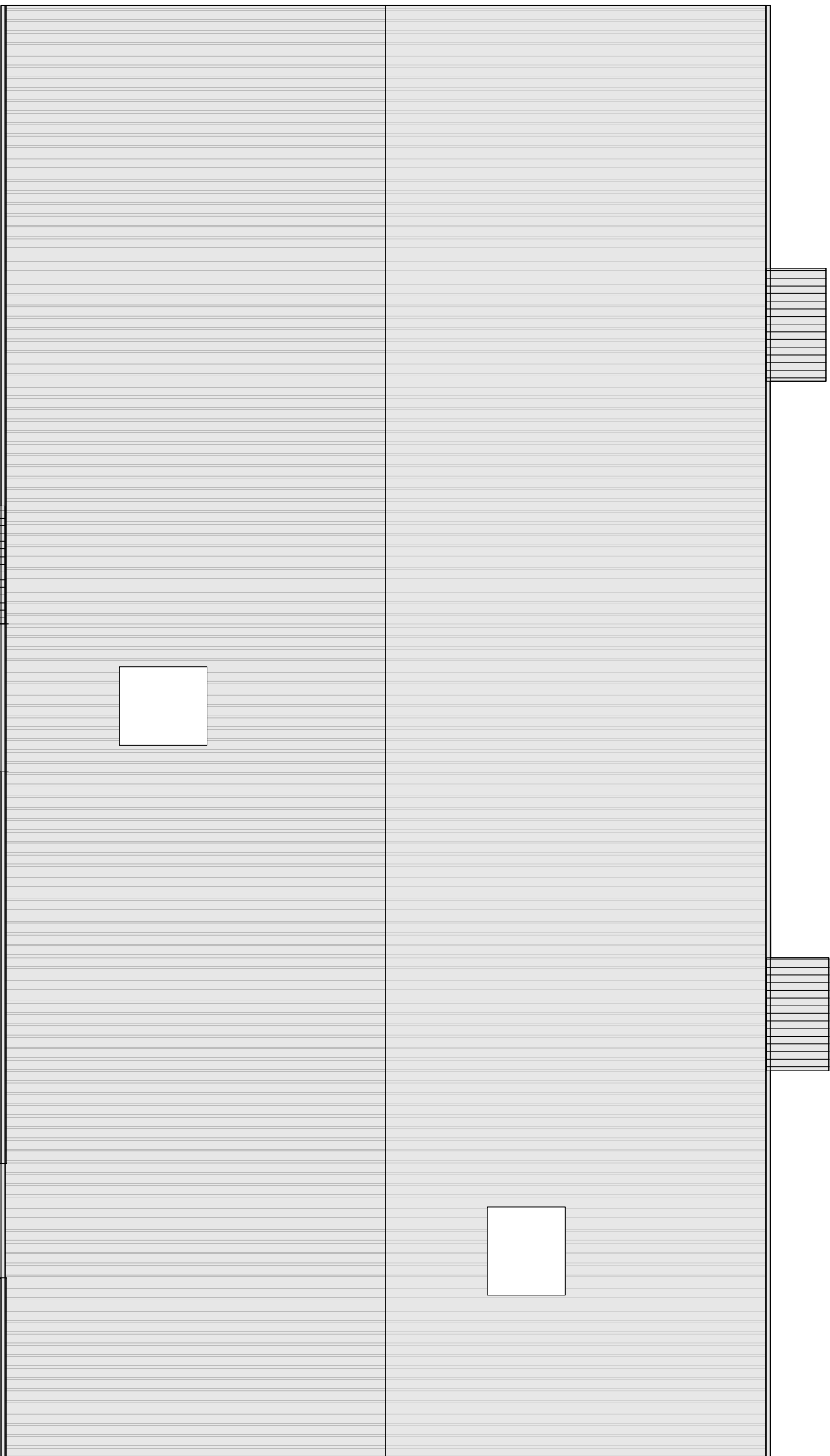
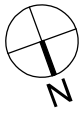
Revisions	Date
A Updated	30.10.23

Cinch Newspaper House
Newbury

Proposed
First Floor Plan

ROGER MEARS ARCHITECTS LLP
Union Chapel, Compton Avenue
London N1 2XD
tel 020 7359 8222
mailto:rm@rmas.co.uk
www.rmeas.co.uk

Date	Scale	Job No.	Code	Dwg No.
17.11.21	1:200@A3	2104	-	117A



01
119 As Built Roof Plan
1:200@A3: 1:100@A1

Notes

Revisions	Date
A Updated	30.10.23

Cinch Newspaper House
Newbury

Proposed
Roof Plan

ROGER MEARS ARCHITECTS LLP
Union Chapel, Compton Avenue
London N1 2XD
tel 020 7359 8222
mail@rmeas.co.uk
www.rmeas.co.uk

Date	Scale	Job No.	Code	Draw No.
17.11.21	1:200@A3	2104	-	119A